



**INSTRUCTIONS MANUAL**  
**ELECTRIC HEATING ELEMENT WITH**  
**CONTROL UNIT**

SUN ON&OFF

SUN ONE TOUCH

SUN DIGITAL

SUN UP&DOWN

WARNING: Read these instructions carefully before using the appliance

## **1. GENERAL INFORMATION**

### **NAME & ADDRESS OF THE MANUFACTURER:**

ECORADCO ISITMA SANAYİ LTD ŞTİ

GÜZELYURT MAH. 5781 SOK. NO : 9

YUNUSEMRE / MANİSA

TURKEY

TEL : +90 236 236 20 49

GSM : +90 532 203 21 83

[www.ecoradco.com](http://www.ecoradco.com)

## **FOREWORD**

The purpose of this document is to provide important information, regarding the installation and use of this appliance.

To obtain the best possible performance and trouble free operation from your appliance it is very important to carefully read these instructions.

The manufacturer declines all responsibility for any operations effected on the appliance without respecting the instructions reported in this manual.

## **2. SAFETY INSTRUCTIONS**

Please read the below instructions thoroughly and study the images carefully.

1.Never use the device that is damaged in any way.

2-Always connect the device to the grounded installation (socket with earth pin).

3-Do not install the heater under an electrical socket point.

4-Your electric heater should be filled with a carefully measured amount of liquid.

In any case which demands its supplementation contact your supplier.

5- The heating element is intended to work in a liquid agent environment. It is advised not to turn the device on in dry conditions for longer than 5 seconds.

6- Electric heater is not a toy. Children under the age of 3 should not be allowed within close proximity of the device without the supervision of an adult.

7- Children should be supervised to ensure that they do not play with the appliance.

8- Children aged 3 to 8 should only be allowed to operate the heater when it has been properly installed and connected. The child must be under adult supervision or have been trained to safely operate the device while understanding the risks.

9-Do not touch metal parts – burning risk. Always make sure that the wire does not touch the heating element that is hot.

10-If the device is used to as a clothes and towel dryer, ensure that the fabrics drying on it have only been washed in water, avoiding contact with with any harsh chemicals.

11-To ensure the safety of very small children, install the towel rail so that the lowest tube is at least 60 cm above the floor.

12-The device should only be installed by a qualified installer in accordance with the applicable regulations regarding safety and all other regulations.

13-All installations to which the device is connected should comply with regulations applicable in the country of installation and use.

14-Extension leads or electric plug adapters should not be used in order to supply power to the heater.

15-The electric installation to which the heater is connected should have the right current differential and overcurrent relay (R.C.D.) OF 30 mA

16-An omni-pole cut-out is required for disconnecting the device on all poles ,via joints positioned at least 3 mm apart.

17- Please check regularly if the power wire is not damaged and if the device can be used in a safe manner.

18-The device must not be connected while being installed. Unplug the device or disconnect the power wire from electrical circuit. Put the casing on the body of the heating element unit before plugging the device. It is necessary to secure the control panel with the right tool in order for the device to work as required

19-Do not open the casing.

20- The device is intended for home use only.

21-This appliance is not intended for use by persons ( including children ) with reduced physical, sensory or mental capabilities or lack of experience and knowledge , unless they have been given supervision or instruction concerning use of the appliance by a person responsible for their safety.

22-This appliance can be used by children aged from 8 years and above and persons with reduced physical, sensory or mental capabilities or lack of experience and knowledge if they have been given supervision or instruction concerning use of the appliance in a safe way and understand the hazards involved. Children shall

not play with the appliance. Cleaning and user maintenance shall not be made by children without supervision.

23-If the supply cord is damaged, it must be replaced by the manufacturer, its service agent or similarly qualified persons in order to avoid a hazard.

24-Before installing or removing the device, make sure it is disconnected from the power source.

25-Do not open the device-any interference with internal components will invalidate the warranty.

26-Regularly check the device for damage to ensure it is safe to use.

27-The device must be disconnected from the mains during cleaning and maintenance.

### **3-INTENDED USE OF DEVICE**

ECORADCO heating elements and control units are electric heating devices and are intended for installation and use in towel rails used for drying towels or clothes.

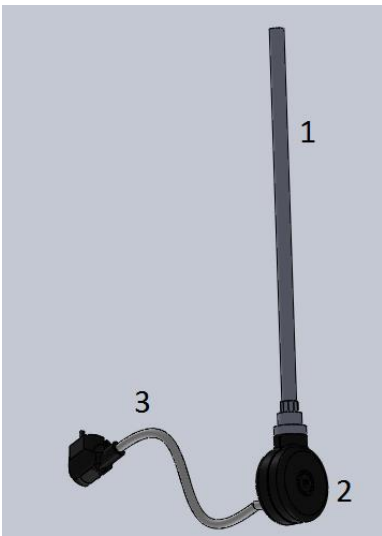
Heating elements are intended to operate in closed installation (not open to atmosphere) only.

### **4- TECHNICAL INFORMATION**

Model code	Sun on&off Sun one touch Sun digital Sun up&down
Electric supply	230 V / 50 Hz
Heating output available	200, 300, 400, 600, 800, 1000 W
Device protection class	Class I
Towel rail connection	G 1/2"
Casing protection mark	IP44
Certification	These products are in compliance with 2014/30/EU Electromagnetic Compatibility Directive and 2014/35/EU Low Voltage Directive These products carry CE mark accordingly.

## **5-CONSTRUCTION OF THE HEATING ELEMENT UNIT**

Complete ECORADCO unit contains heating element and controller for it.



1. Heating element
2. Controller
3. Power cord

## **6-ELECTRIC TOWEL RAIL:**



1-Towel rail powered by the heating element only, not connected to the central heating system.

2-Water, water with anti-freezing agent or the right type of oil should be used as a heating agent – possibility of installation and correct use is conditioned by meeting manufacturer's requirements on the towel rail and heating element.

3-Filling the towel rail with too much liquid leads to exceeding of acceptable pressure and damaging of the towel rail or heating element.

4-Heating element should not be fitted horizontally or turned downwards.

5-The towel rail is to be installed so that switches and other controls can not be touched by a person in the bath or shower.

-WARNING: In order to avoid a hazard for very young children, this appliance should be installed so that the lowest heated rail is at least 600 mm above the floor.

## **7-INSTALLATION OF THE HEATING ELEMENT**

WARNING! The device must not be connected to electricity during installation. unplug the device prior to installation.

WARNING! Please take every precaution when filling the towel rail in order to avoid being burnt by hot liquid

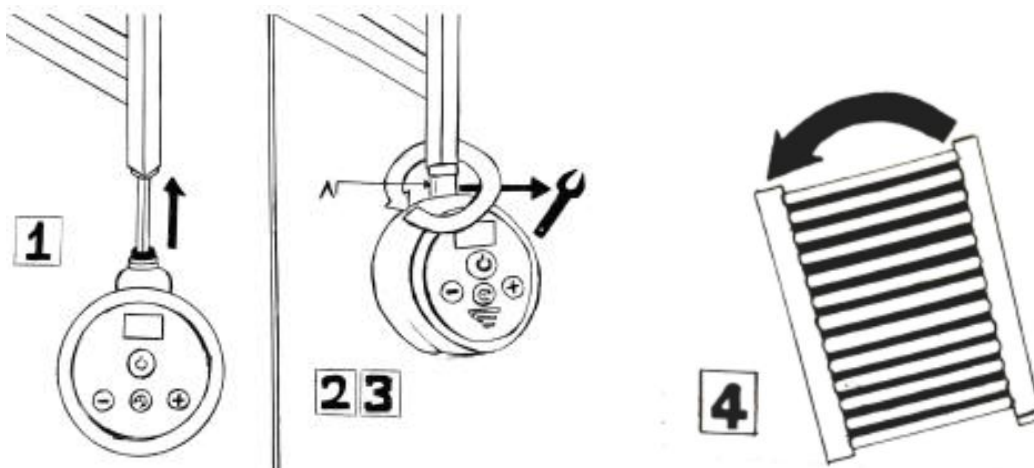
WARNING! Do not switch the heating element on if it is not fully immersed in the towel rail.

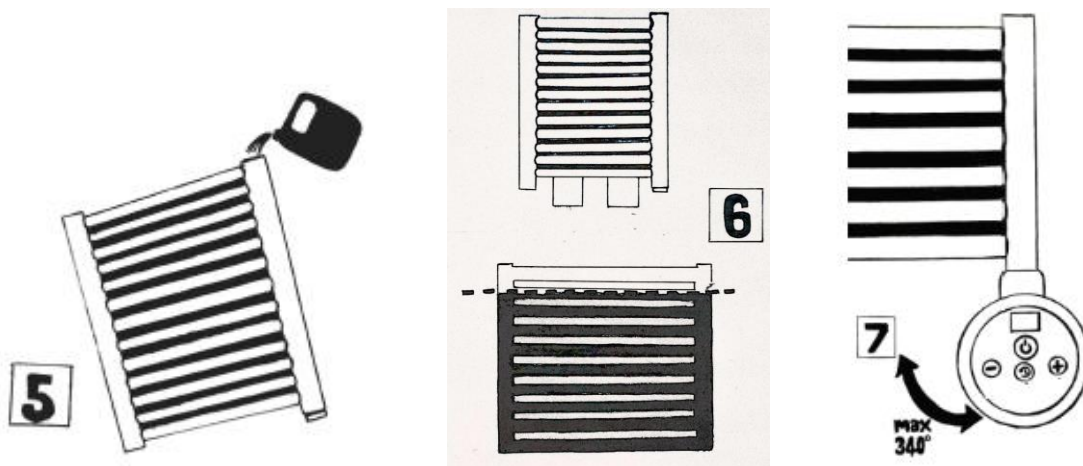
WARNING!

Do not install the heating element by turning the enclosure itself!

Tightening of the unit should be made by the help of wrench!

WARNING! Remove the protective coating on the plastic enclosure before use!





1. Insert heating element with controller unit (1) into the threaded opening at the bottom end of the collector.

2. Twist the head of the heating element with a spanner no 26.

3. Position the element in such a way so that the indent in the head connection (A) was directed towards you or sideways.

4. Put the towel rail in an oblique position to make sure that the upper collector opening is in the highest point.

The towel rail must not be rested on the heating element controller or any other parts of the connection at any time!!!

5. Fill the towel rail with the heating agent.

6. Put the towel rail back in an upright position and check the level of the liquid inside it.

7. Make sure that the connection between the towel rail and the heating element is tight.

8. Position the controller casing in a way providing an easy and comfortable access.

9. Secure the casing at the back with Allen key.

10. Connect the device to electricity and turn on the heating element unit . One can use a hot heating agent of temperature not exceeding 65°C. In such case, fill the entire towel rail, put it in an upright position and turn the heating element unit on

11 .Set the maximum possible temperature required and observe the liquid level rise the excess liquid may be slopping through the upper opening – remove excess liquid in order not to allow for the controller to be flooded or wetted.

12. When the level of the heating agent stops rising, wait another 5 minutes, turn off the heating element unit and disconnect the device from electricity.

13. Do not wait until the towel rail cools down and pour a small amount of the liquid out to the mid level of the top pipe.

14. Close the upper opening of the collector with a dedicated seal and put it back on the wall.

15. Connect the heating element unit to the socket/installation. The device is ready to work.

## **8-PRODUCT DISPOSAL**



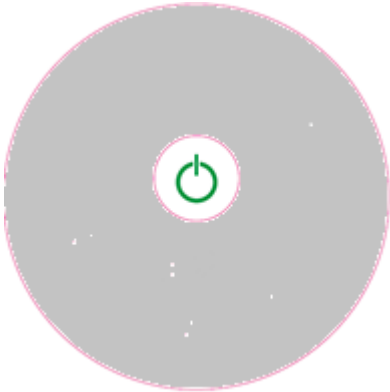
This product should not be disposed of as a general waste but should be brought to the appropriate collection point for re-cycling of electric and electronic devices.

This information is provided by the sign on the product ,user manual and packaging. Information on the appropriate point for used devices can be provided by your local authority ,product distributor or the from where the product was purchased .




## 9-ECORDACO MODELS

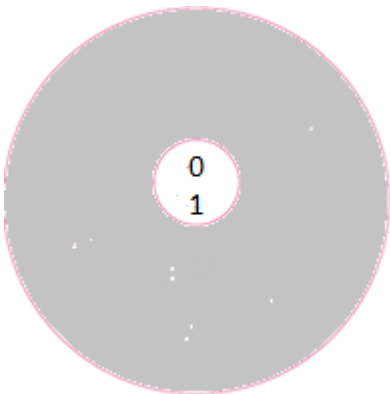
### SUN ONE TOUCH



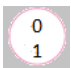
Heating element unit heats the towel rail that it is installed in.

Button  is used to turn the device on / off. Green led will illuminate when the device is turned on. The light will go off when the device is turned off.

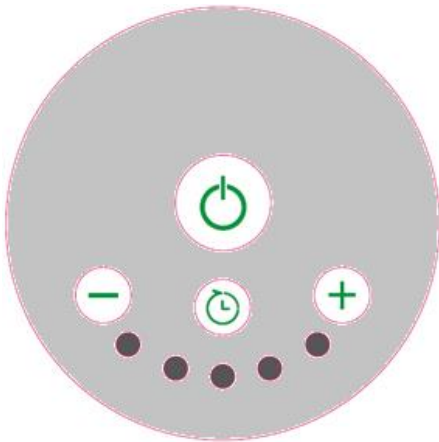
### SUN ON&OFF






Heating element unit heats the towel rail that it is installed in.


Button  is used to turn the device on / off. The device is turned off at '0' position.  
And the device is turned on at '1' position.

## SUN UP&DOWN



Heating element unit heats the towel rail that it is installed in.

Button  is used to turn the device on / off. Buttons  and  are used to regulate temperature.

Timer can be set from 1 hour to 5 hours by pressing the timer button . The number of illuminated leds shows the set hour. (Ex: 3 leds light up for 3 hours).

After the timer has been set, the heating element unit returns to the temperature set value.

Our heating elements have an internal NTC sensor to regulate the temperature according to room temperature. Below are the temperature values according to led settings:

•: 2-10°C

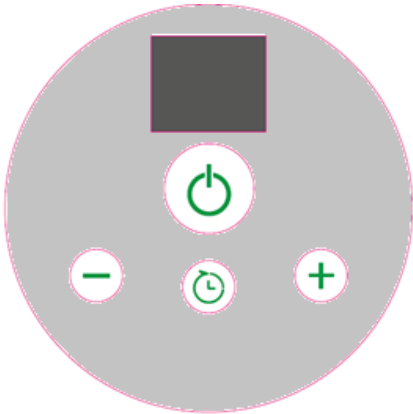
••: 11-21°C

•••: 22-32°C




••••: 33-41°C


•••••: 41+°C

## SUN DIGITAL



Heating element unit heats the towel rail that it is installed in.

Button  is used to turn the device on / off. Buttons  and  are used to regulate temperature. The values can be seen on the digital screen.

Button  is used to set the time period from 1 to 5 hours.

When the timer is set ,(from 1 hour to 5 hours) a flashing dot will appear on the display between the two numbers . It shows that the timer is working.

**NOTE** – If you set the temperature of the control unit lower than the room temperature, the unit will not operate. The control unit operates when the temperature is set at least 1 degree higher than the room temperature.

## **10- WARRANTY**

1-The subject of this warranty is a Ecoradco electric heating element with control unit. Product name and characteristics are specified on the packaging.

2-By accepting the device on purchase, the Client confirms that the product is of full value. The Client should immediately inform the Seller of any discovered faults – otherwise it will be understood that the Product was faultless at the time of purchase. This refers especially to any faults or damages of the control panel case.

3-Warranty period for the Product is 24 months from the date of purchase

4-Any claims made will be processed on production of the warranty card and the evidence of purchase. Manufacturer has the right to reject any claim on the grounds of not presenting of any of the above documents.

5-This warranty does not comprise any faults that are due to:

- Incorrect (not in accordance with the manual) installation, use or disassembly,
- Incorrect use of the heating element (ie. for any purpose that is not specified by the Manufacturer as intended for this type of product),
- Product being handled by unauthorized persons,
- Any faults or damages caused by the Client after having purchased and accepted the Product.

6-The attached Product Manual is an integral element of the Warranty. Please read it carefully prior to the Product installation and use.

7-The Manufacturer is obliged to remove any production fault within 14 working days from receipt of the faulty device to Manufacturer's premises.

8-Should the repair turn out impossible, Manufacturer is obliged to replace the faulty Product with a new, full-value unit of identical parameters.

## 11- FAULT CODES

Code No	System Behavior	Action to take
E01	Heating sensor cable might be disconnected. Heating prob ntc might be damaged. Heating element might be damaged.	The product should be reset. If the failure still exists the product must be stopped.
E02	This failure shows that there is an abnormal sudden heating exists at the product. Electronic control unit might be damaged. Heating element might be damaged. Voltage change at the electric supply system might affect the unit.	The product should be reset. If the failure still exists the product must be stopped.

## WARRANTY CERTIFICATE

**MANUFACTURER:**

Name: ECORADCO ISITMA  
SANAYİ LTD ŞTİ

Address: GÜZELYURT MAH.  
5781 SOK. NO :9  
YUNUSEMRE / MANİSA

TURKEY

Tel: +90 236 236 20 49

Authorised signature:

Stamp:

**SELLER:**

Name:

Address:

Phone:

Faks:

e-mail:

Authorised signature:

Stamp:

### PRODUCT

Type : Electric Heating Element  
Trademark: ECORADCO  
Model: SUN SERIES

Warranty Period: 2 Years  
Repair Period :20 Days  
Bandrol ve Seri No:

### WARRANTY CONDITIONS

- 1- Warranty period for the Product is 24 months from the date of purchase
- 2- This warranty does not comprise any faults that are due to:
  - incorrect (not in accordance with the manual) installation, use or disassembly,
  - incorrect use of the heating element (ie. for any purpose that is not specified by the Manufacturer as intended for this type of product),
  - Product being handled by unauthorized persons,
  - any faults or damages caused by the Client after having purchased and accepted the Product.
- 3- Should the repair turn out impossible, Manufacturer is obliged to replace the faulty Product with a new, full-value unit of identical parameters.